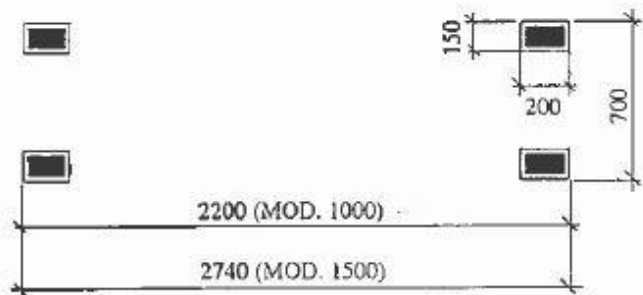
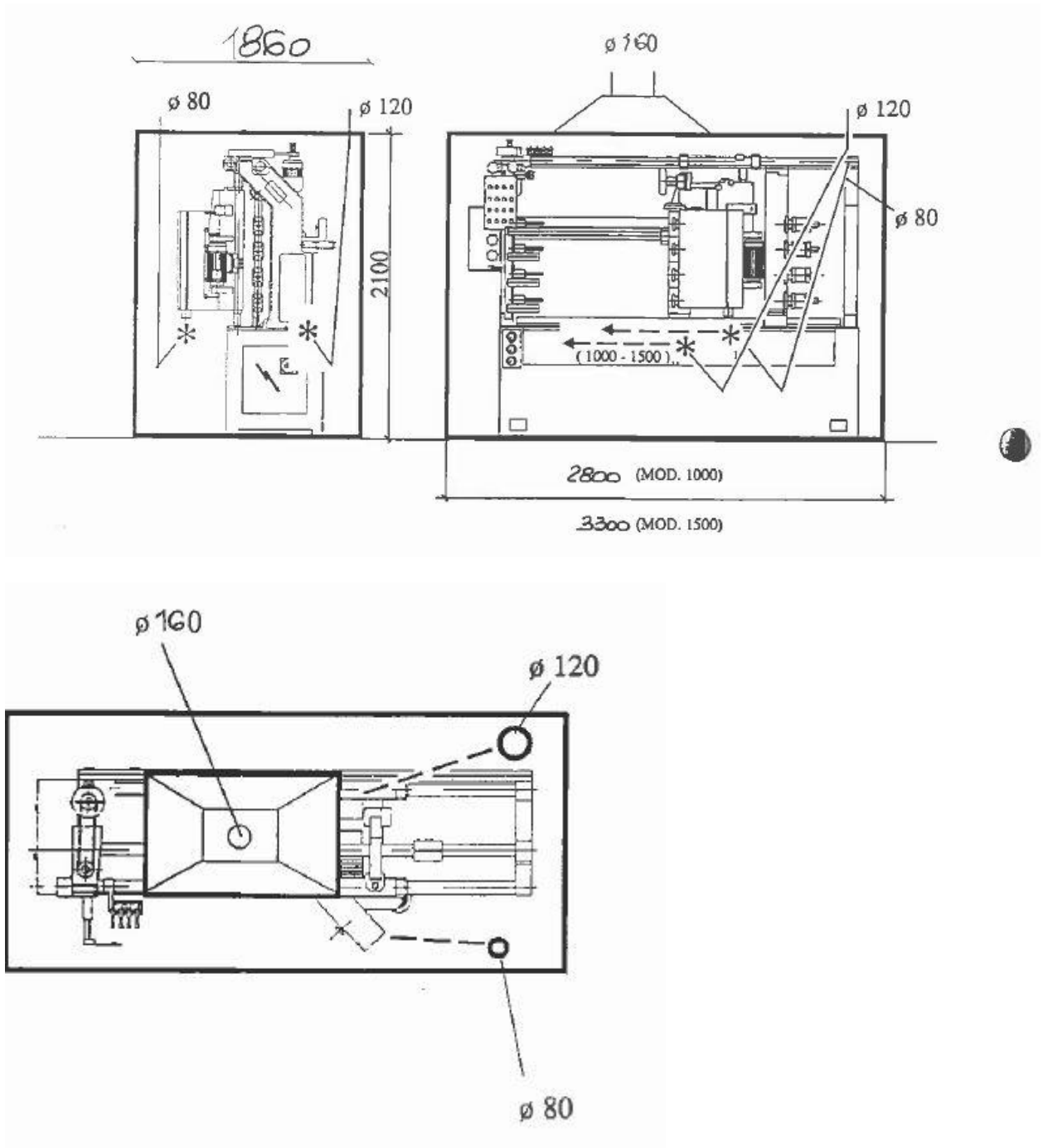


Ground support feet  
375 Kg



Фундаментальная опора 375 кг.

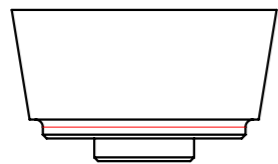
# Всасывание Т4МО



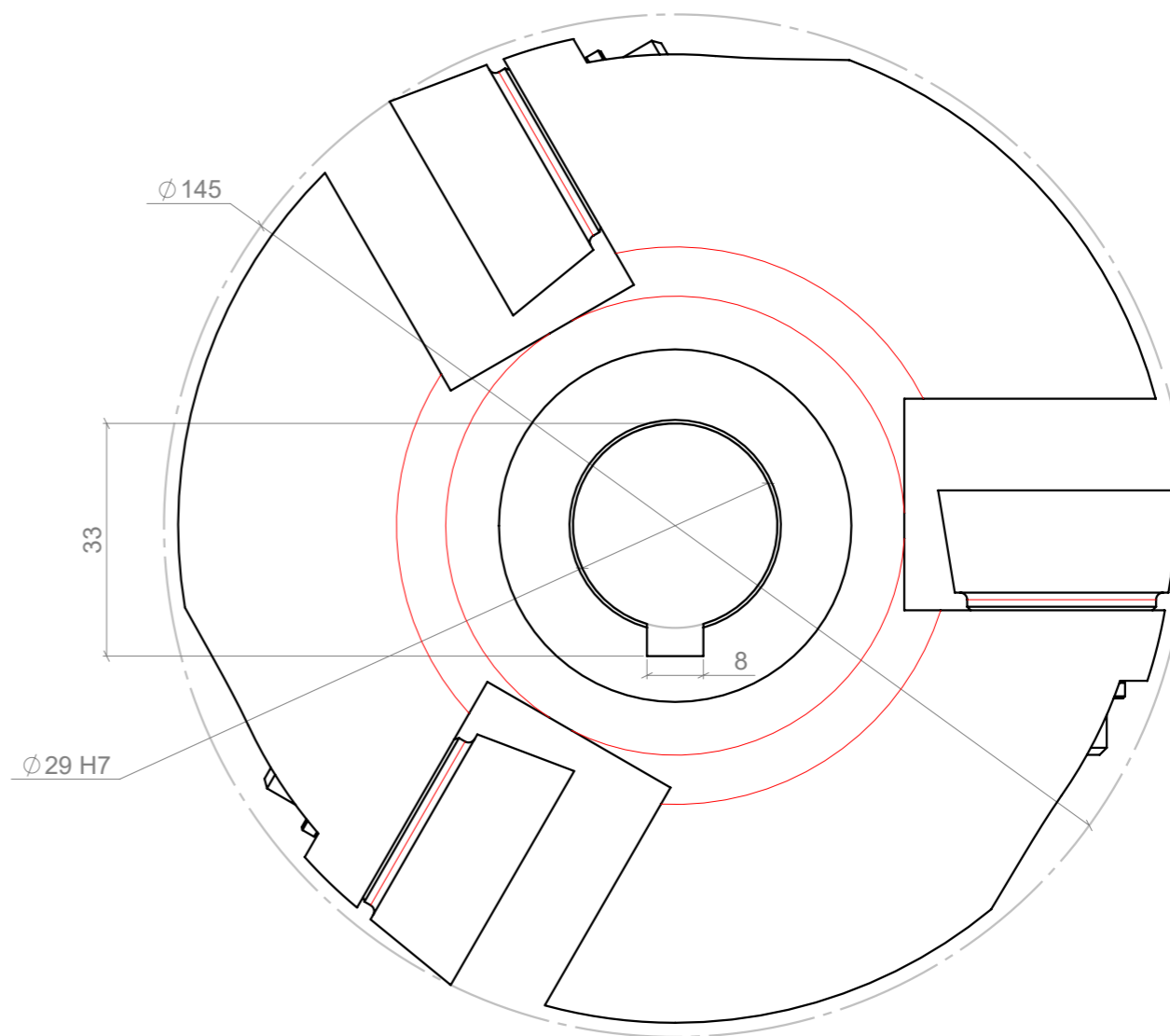
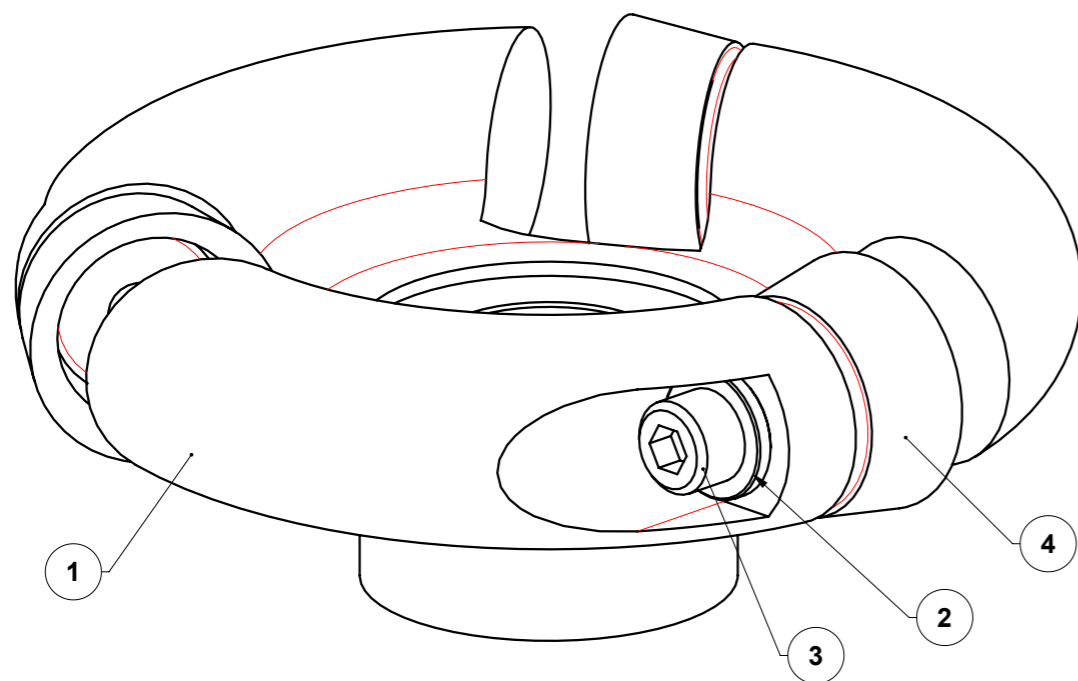
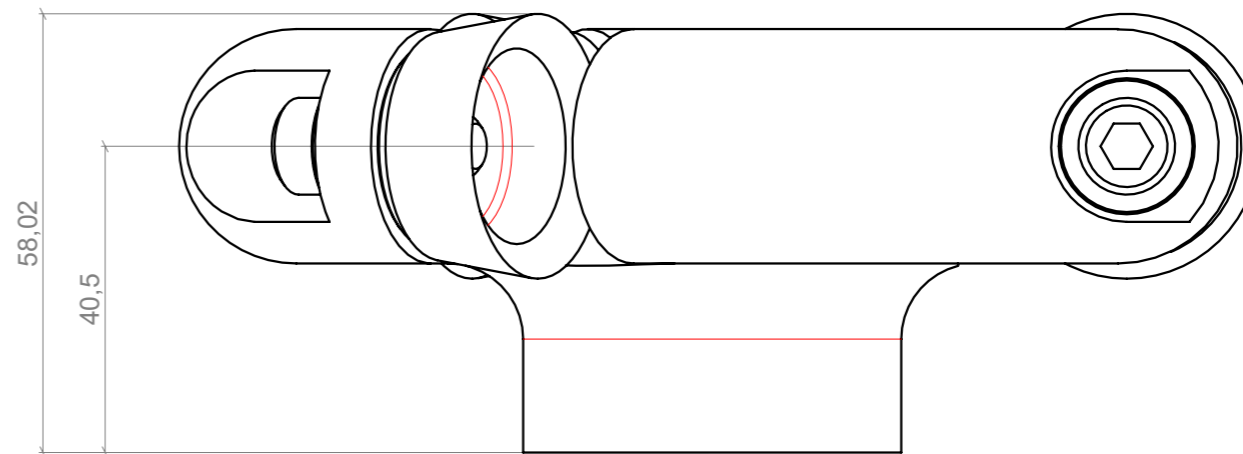
Процесс всасывания

(n°1 x  $\phi 120\text{mm}$   
n° 1 x  $\phi 80\text{ mm}$   
n° 1 x hood  $\phi 200$  )


**Обязательным условием является установка всасывающего трубопровода из антистатичного и невозгораемого материала.**



**BICCHIERINO  
COD. 48600**



Pos.	Cod. parte	Descrizione	Q.tà
1	48599	Corpo Testa Portabicchierini per Tornio DX - D145x58 F 29 + CH Z3	1
2	3012	Rondella per frese porta bicchierini	3
3	4419	Vite M8x20 UNI 5931	3
4	48600	Bicchierino Per Tornio Ø35.02 / Ø35.05	3

Materiale Acciaio C40	Finitura Standard G3	R.P.M. max.	Peso (g) 4.87	Cliente			
 G3 di Fantacci & C.srl Loc. Drove, 7/A - 53036 Poggibonsi (SI) ITALY Tel. +39 0577 981011/983386 Fax +39 0577 982520 www.g3fantacci.com		Scala 1:1	Foglio 1/1	Formato A3	Operatore A. Sacchini	Data 12/03/2020	Cod. Prog
Descrizione Assieme Testa Portabicchierini per Tornio DX - D145x58 F 29 + CH Z3							Cod. Dis <b>48601</b>